

Industrial Connectors



CA-/CM-series are circular connectors for extremely rough environments. The robust circular connectors of the CA-/CM-series meet the most stringent requirements of general equipments in the field of measurement, control and regulation technology.

Technical features:

- extremely high vibration resistance even under high stress
- high resistance to external influences
- extremely installation-friendly due to fewer components
- suitable for various types of cables
- the CM-series is compatible with metal connectors as per MIL-C-5015 or VG95342
- robust housing made of impact resistant, glass fiber reinforced plastic
- available in 4- and 7-pole variants (including PE) in CA-series and in 3- to 17-pole variants in CM-series
- for voltages up to 400V (CA-series) / 50V (CM-series) and for currents up to 16A
- protection class up to IP67

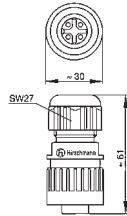
Applications:

The CA-/CM-series is optimally suitable for all areas of applications in hydraulics, pneumatics, device and equipment manufacturing and traffic control technology as well as in photovoltaic-area.

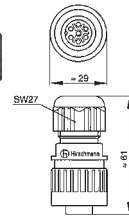
CA Series cable diameter 6-12mm



CA 3 LD



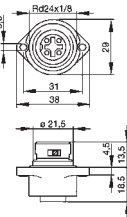
CA 6 LD



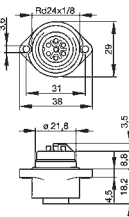
Technical Parameters	CA 3 LD	CA 6 LD
Type	IDC female connector	IDC female connector
Number of contacts	3 + PE	6 + PE
Max. conductor size	2,5 mm ²	0,75 mm ²
Rated voltage	250 VDC/400 VAC	250 VDC/250 VAC
Rated current	10 A DC/16 A AC	10 A DC/10 A AC
Protection class	IP67	IP67
Type of termination	screw	solder
Suitable mate	CA 3 LS, CA 3 GS	CA 6 LS, CA 6 GS

Part No.	Ord.No.
S CA 3 LD	49985
S CA 6 LD	38125

CA 3 GD



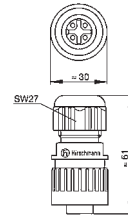
CA 6 GD



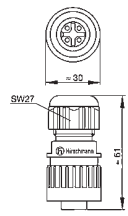
Technical Parameters	CA 3 GD	CA 6 GD
Type	panel-mounted socket with flange	panel-mounted socket with flange
Number of contacts	3 + PE	6 + PE
Max. conductor size	2,5 mm ²	0,75 mm ²
Rated voltage	250 VDC/400 VAC	250 VDC/250 VAC
Rated current	10 A DC/16 A AC	10 A DC/10 A AC
Protection class	IP67	IP67
Type of termination	screw	solder
Suitable mate	CA 3 LS	CA 6 LS

Part No.	Ord.No.
S CA 3 GD	36558
S CA 6 GD	36559

CA 3 LS



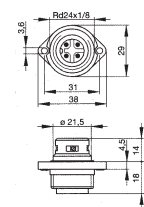
CA 6 LS



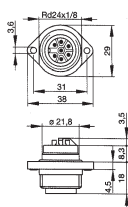
Technical Parameters	CA 3 LS	CA 6 LS
Type	Straight cable plug integrated strain relief	Straight cable plug integrated strain relief
Number of contacts	3 + PE	6 + PE
Max. conductor size	2,5 mm ²	0,75 mm ²
Rated voltage	250 VDC/400 VAC	250 VDC/250 VAC
Rated current	10 A DC/16 A AC	10 A DC/10 A AC
Protection class	IP67	IP67
Type of termination	screw	solder
Suitable mate	CA 3 LD, CA 3 GD	CA 6 LD, CA 6 GD

Part No.	Ord.No.
S CA 3 LS	41121
S CA 6 LS	50373

CA 3 GS



CA 6 GS



Technical Parameters	CA 3 GS	CA 6 GS
Type	panel-mounted connector with flange	panel-mounted connector with flange
Number of contacts	3 + PE	6 + PE
Max. conductor size	2,5 mm ²	0,75 mm ²
Rated voltage	250 VDC/400 VAC	250 VDC/250 VAC
Rated current	10 A DC/16 A AC	10 A DC/10 A AC
Protection class	IP67	IP67
Type of termination	screw	solder
Suitable mate	CA 3 LD	CA 6 LD

Part No.	Ord.No.
S CA 3 GS	36556
S CA 6 GS	36557

CA 00 SD 1



CA 00 SD 4



Part No.	Description
CA 00 SD 1	Protection cap for cable plugs CA-series with variable loop
CA 00 SD 4	Protection cap for panel-mounted sockets with fixed loop

Part No.	Ord.No.
S CA 00 SD 1	3607
S CA 00 SD 4	3610