

## GDM Series

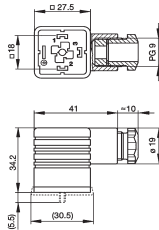


The rectangular connectors of the GDM-series for hydraulic, pneumatic and electro-magnetic actuators in all forms are well-equipped to handle heavy stresses in the field. This series with a high loading capacity is especially well-suited for use with solenoid valves, pressure sensors, flow controllers and in heating equipment in control systems for gas appliances and oil burners. Even in vibration-endangered devices and structural components such as construction machines or in conveyor installations, it is possible to have a highly durable solution with the use of crimp technology. The GDM series can be used wherever a "metal-free" environment is required, for example in the food sector and the chemical industry.

### GDM 2009 GDM 2009 J GDM 3009



**NEW!**



Technical Parameters	GDM 2009	GDM 2009 J Black	GDM 3009
<b>Type</b>	cable socket with central screw, black		
<b>Number of contacts</b>	2 + PE	2 + PE	3 + PE
<b>Conductor size</b>	1,5 mm <sup>2</sup>	1,5 mm <sup>2</sup>	1,5 mm <sup>2</sup>
<b>Cable diameter</b>	4.5 - 7 mm	4.5 - 7 mm	4.5 - 7 mm
<b>Rated voltage</b>	250 V AC/DC	250 V AC/DC	250 V AC/DC
<b>Rated current</b>	16 A	16 A	16 A
<b>Type of termination</b>	screw	screw/cable shoe /cable eye	screw
<b>Protection class</b>	IP65	IP65	IP65
<b>Operating temp.</b>	-40°C to 125°C	-40°C to 125°C	-40°C to 125°C

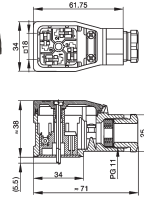
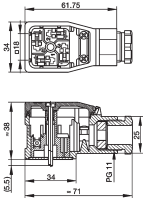
  

Part No.	Manuf. No.	Ord.No.
S GDM 2009	931965-100	49987
S GDM 2009 J Black	931236-100	67641
S GDM 3009	931969-100	40069

### GDME 2011

### GDME 3011

Strain relief and transparent cover, possibility to fit electronic inserts...



Technical Parameters	GDME 2011	GDME 3011
<b>Type</b>	cable socket with central screw M 3 x 40	
<b>Number of contacts</b>	2 + PE	3 + PE
<b>Conductor size</b>	1,5 mm <sup>2</sup>	1,5 mm <sup>2</sup>
<b>Cable diameter</b>	10 - 14 mm	10 - 14 mm
<b>Rated voltage</b>	400 V AC / 250 V DC	400 V AC / 250 V DC
<b>Rated current</b>	16 A	16 A
<b>Type of termination</b>	screw	screw
<b>Protection class</b>	IP65	IP65
<b>Operating temperature</b>	-40°C to 85°C	-40°C to 85°C

Part No.	Manuf. No.	Ord.No.
O GDME 2011	933029-100	67995
O GDME 3011	933022-100	69539

## Gaskets for GDM Series



**GDM 3-16 NBR**  
Operating temperature range: -30°C to 90°C

**GDM 3-7 NBR**  
Operating temperature range: -30°C to 90°C

**GDM 3-21 EPDM**  
Operating temperature range: -40°C to 125°C

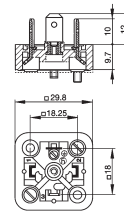


Part No.	Manuf. No.	Ord.No.
S GDM 3-16 NBR	731531-002	36573
S GDM 3-7 NBR	730801-002	50804
S GDM 3-21 EPDM	731739-004	8549

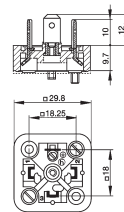
## GSA Series



### GSA 2000



### GSA 3000



Technical Parameters	GSA 2000	GSA 3000
<b>Type</b>	appliance connector with retaining nut	
<b>Number of contacts</b>	2 + PE	3 + PE
<b>Rated voltage</b>	400 V AC/DC	400 V AC/DC
<b>Rated current</b>	16 A	16 A
<b>Type of termination</b>	screw, solder	screw, solder
<b>Protection class</b>	IP65	IP65
<b>Operating temperature</b>	-40°C to 125°C	-40°C to 125°C

Part No.	Manuf. No.	Ord.No.
S GSA 2000	932591-100	40192
S GSA 3000	932597-100	7227

## Gaskets for GSA Series



### GSA 200-7 EPDM

Operating temperature range: -40°C to 125°C

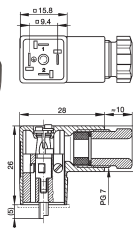


Part No.	Manuf. No.	Ord.No.
S GSA 200-7 EPDM	730268-003	7229

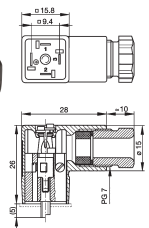
## GDS Series



### GDS 207



### GDS 307



Technical Parameters	GDS 207	GDS 307
<b>Type</b>	cable socket with central screw	
<b>Number of contacts</b>	2 + PE	3 + PE
<b>Conductor size</b>	0,75 mm <sup>2</sup>	0,75 mm <sup>2</sup>
<b>Cable diameter</b>	4,5 - 6 mm	4,5 - 6 mm
<b>Rated voltage</b>	250 V AC/DC	250 V AC/DC
<b>Rated current</b>	6 A	6 A
<b>Type of termination</b>	screw	screw
<b>Protection class</b>	IP65	IP65
<b>Operating temperature</b>	-40°C to 125°C	-40°C to 125°C

Part No.	Manuf. No.	Ord.No.
O GDS 207	933138-106	69545
O GDS 307	933024-100	69544

## Gaskets for GDS Series



### GDS 307-2 NBR

Operating temperature range: -30°C to 90°C



Part No.	Manuf. No.	Ord.No.
O GDS 307-2 NBR	730185-002	58308