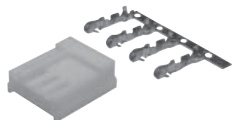


## DC Connectors for PC

### SE-LC3

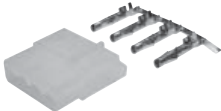
DC female connector for PC Floppy 3,5"



Part No.	Ord.No.
S SE-LC3	23565

### SE-LC4

DC female connector for Floppy 5,25"



Part No.	Ord.No.
S SE-LC4	20576
S SEM 4	22730

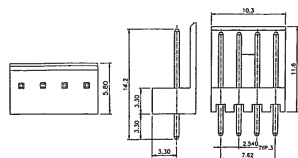
### SEM 4

DC connector for PC Floppy 5,25"



### FK 03 P

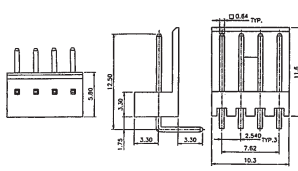
DC connector for PC 3,5" PCB, RM=2,54mm, straight



S FK 03 P	47026
-----------	-------

### FK 03 PW

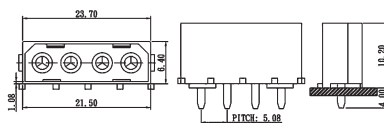
DC connector for PC 3,5" PCB, RM=2,54mm, angled



Part No.	Ord.No.
S FK 03 PW	47027

### FK 05 P

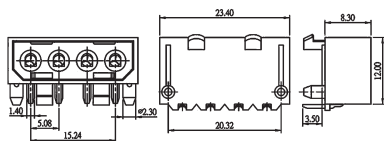
DC connector for PC 5,25" PCB, RM=5,08mm, straight



Part No.	Ord.No.
S FK 05 P	46944

### FK 05 PW

DC connector for PC 5,25" PCB, RM=5,08mm, angled



Part No.	Ord.No.
S FK 05 PW	46945

## XA Series Connectors



### XAP-02V-1

2-,3-pole, standard type RM2,5mm



### XARR-02V

2-,3-pole with panel locks, RM2,5mm



Part No.	Ord.No.	Pole
S XAP-02V-1	68671	2
S XAP-03V-1	68672	3
S XARR-02V	68669	2
S XARR-03V	68670	3

### SXA-001T-P0.6



### SXAM-001T-P0.6



Socket contact 0,08-0,33mm<sup>2</sup> for XA connectors

Part No.	Ord.No.
S SXA-001T-P0.6	68674
S SXAM-001T-P0.6	68673

## Mini-Universal Mate-N-Lok Series Connectors

### Housing Type - Plug



Possibility to combine male or female headers.

Part No.	Ord.No.	Description
S 0-0172165-1	1407	2P, RM 4,14mm
S 0-0172166-1	70850	3P, RM 4,14mm
S 0-0172167-1	1408	2x2P, RM 4,14mm
S 0-0172168-1	1409	2x3P, RM 4,14mm
S 0-0172169-1	1410	3x3P, RM 4,14mm
S 0-0350777-1	50820	2P, RM 6,35mm
S 0-0350766-1	2723	3P, RM 6,35mm

### Housing Type - Receptacle (Cap)



Possibility to combine male or female headers. Suitable also for panel mounting (except \*).

Part No.	Ord.No.	Description
S 0-0172157-1	1401	2P, RM 4,14mm
S 0-0172233-1	70851	2P, RM 4,14mm *
S 0-0172158-1	62638	3P, RM 4,14mm
S 0-0172234-1	70852	3P, RM 4,14mm *
S 0-0172159-1	1402	2x3P, RM 4,14mm
S 0-0172160-1	1403	2x3P, RM 4,14mm
S 0-0172161-1	1404	3x3P, RM 4,14mm
S 0-0350778-1	46147	2P, RM 6,35mm

### AMP 0-0170364-1

Crimp contact pin for 0,3-0,89mm<sup>2</sup> brass/Sn



### AMP 0-0170366-1

Crimp contact socket for 0,3-0,89mm<sup>2</sup> brass/Sn



Part No.	Ord.No.	Description
S 0-0170364-1	1418	0,3-0,89mm2
S 0-0170366-1	1420	0,3-0,89mm2