

Cable Couplers

SPO series cable couplers are designed for permanent crimping connection of two conductors. Allowed conductors' diameters are defined in table below. SPO-FAST connector is designed for repeat usage. Insulation's colour: R=red, B=blue, Y=yellow.

SPO-B, SPO-R, SPO-Y

SPO-FAST



Type	Ord.No.	Conductor size
S SPO-R	40447	0,5-1,0 mm ²
S SPO-B	40448	1,5-2,5 mm ²
S SPO-Y	40449	4,0-6,0 mm ²
S SPO-FAST	40459	1,5-2,5 mm ²

Ring and Fork Terminals

Cable forks (VID) or cable rings (OKO) with internal diameter 4,3mm. Crimp to conductors with specific size. Insulation's colour: R=red, B=blue, Y=yellow.

OKO...



VID...

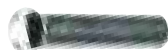


Type	Ord.No.	Conductor size
S OKO43-R	40453	0,5-1,5mm ²
S OKO43-B	40454	1,5-2,5mm ²
S OKO43-Y	40455	4,0-6,0mm ²
S VID43-R	40450	0,5-1,5mm ²
S VID43-B	40451	1,5-2,5mm ²
S VID43-Y	40452	4,0-6,0mm ²

Cable End-Sleeves

Non-insulated cable end-sleeves

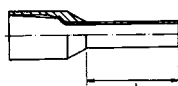
They are made from copper and tin-plated, intended for conductors with specific cross section: NIT Cross section [mm²] x length [mm].



Type	Ord.No.
S NIT 0,25x5	10897
S NIT 0,34x5	10898
S NIT 0,5x6	10899
S NIT 0,75x6	10900
S NIT 1x6	10901
S NIT 1,5x7	10902
S NIT 2,5x7	10903

Insulated cable end-sleeves

They are made from copper and tin-plated, polypropylene insulation, intended for conductors with specific cross section: NITI Cross section [mm²] x length [mm]. Operating temperature range is -55°C to +105°C. Using insulated cable end-sleeves raises work safety and saves mounting time.

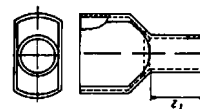


Type	Ord.No.	Colour
S NITI 0,14x8 GY	70125	grey
S NITI 0,25x8 BU	10859	lightblue
S NITI 0,34x8 TQ	10861	turquoise
S NITI 0,5x10 OG	11029	orange
S NITI 0,5x8 WH	10864	white
S NITI 0,75x8 GY	10868	grey
S NITI 1x8 RD	10869	red
S NITI 1,5x8 BK	10874	black

S NITI 2,5x8 BU	10877	blue
S NITI 4x9 GY	10881	grey

Twin cable end-sleeves

They are made from copper and tin-plated, polypropylene insulation, intended for two conductors with specific cross section: NITI Cross section [mm²] x Length [mm]. Operating temperature range is -55°C to +105°C. Using insulated cable end-sleeves raises work safety and saves mounting time.

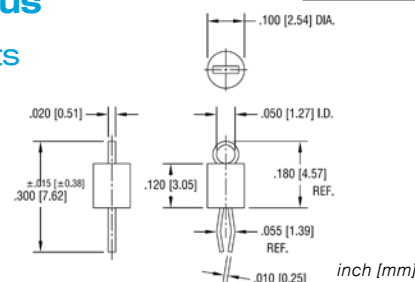


Type	Ord.No.	Colour
S NITI 2x0,5x8 WH	10886	white
S NITI 2x0,75x8 GY	10888	grey
S NITI 2x1,5x8 BK	10894	black
S NITI 2x1x8 RD	10893	red
S NITI 2x2,5x9 BU	10896	blue

Miscellaneous

SMT Test Points

KEYSTONE 5000



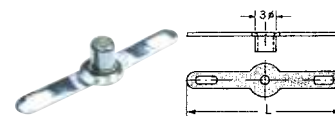
Type	Ord.No.	Colour
S Keystone 5000	53596	red
S Keystone 5002	60705	white
S Keystone 5003	56965	orange

Soldering pins

Soldering pins for PCB mounting (solder/rivet). Dimensions are specified in the table below.

SPOC-30

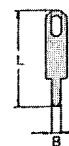
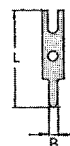
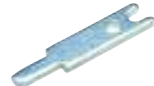
SPOC-3



Type	Ord.No.	Dimensions
S SPOC-30	44110	d=3/L=12mm
S SPOC-3	10919	d=3/L=24mm

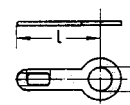
SPOC-4

SPOC-5



Type	Ord.No.	Dimensions
S SPOC-4	10575	B=0,9/L=8,5mm
S SPOC-5	10579	B=1,2/L=11,3mm

SPOC-00, 0, 1, 2



Type	Ord.No.	Dimensions
S SPOC-2	10912	d=3,2/L=12mm
S SPOC-00	10914	d=4,3/L=12mm
S SPOC-0	10913	d=4,3/L=18mm
S SPOC-1	10915	d=6,4/L=12mm