

## Rocker Switches



The Marquardt Group is a global player in the high technology switch manufacturing market, and they maintain their position by developing innovative switching solutions that exceed the quality and performance expectations of customers.

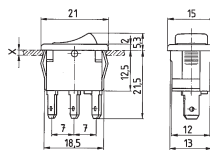
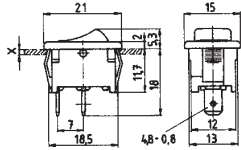


Marquardt Switches provides high quality, innovative switching products to the Global Automotive, Power Tool and Appliance Switch Markets. We are customer-focused, quality-minded and driven to excellence by the best people in the industry.

### 19x13 mm Series

1801.1x02

1800.1102



**Part No.**    **Description**

1800.1102 SPST, 10(4)A/250V, Faston 4,8mm, glim-lamp backlight , ON-OFF

1801.1102 SPST,10(4)A/250V, Faston 4,8mm, ON-OFF

1801.1202 SPDT, 4(2)A/250VAC, Faston 4,8mm, OFF-MOM

**Part No.**    **Ord. No.**

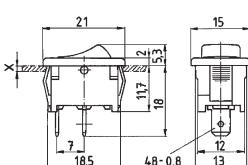
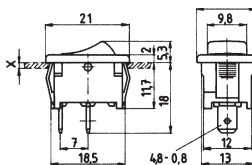
S 1800.1102    422

S 1801.1102    426

S 1801.1202    429

1801.1146

1801.1119



**Part No.**    **Description**

1801.1146 SPST, 10(4)A/250V, Faston 4,8mm, ON-OFF

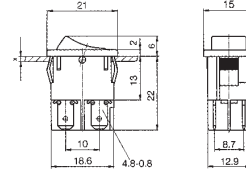
1801.1119 SPST, 10(4)A/250V, Faston 4,8mm , red mark, ON-OFF

**Part No.**    **Ord. No.**

S 1801.1146    428

O 1801.1119    427

1858.1103



**Part No.**    **Description**

1858.1103 DPST, 10(4)A/250V, Faston 4,8mm, non-flammable Powerful with inrush currents (capacitive) up to 100 A, ON-OFF

**Part No.**    **Ord. No.**

S 1858.1103    514

203.089.011



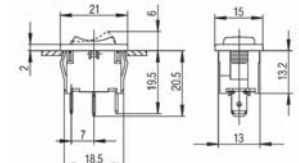
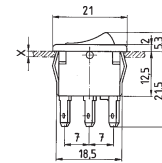
Transparent PVC-protection cap for single-pole switches of size 19x13 mm. Serves as dust and water protection of the actuation side.

**Part No.**    **Ord. No.**

S 203.089.011    572

1808.1103

1808.1302



**Part No.**    **Description**

1808.1103 SPDT 6(2)A/230V, Faston 4,8mm, ON-OFF-ON

1808.1302 DPNO, 6(4) A/250V, Faston 4,8mm, MOM-OFF-MOM

**Part No.**    **Ord. No.**

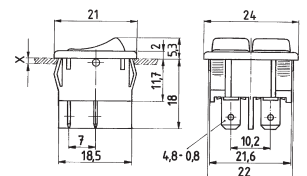
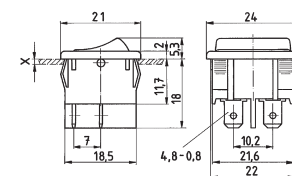
S 1808.1103    443

S 1808.1302    444

### 19x22 mm Series

1802.1108

1806.1102



**Part No.**    **Description**

1802.1108 DPDT, 10(4)A/250V, Faston 4,8mm, ON-OFF

1806.1102 2xSPST, 10(4)A/250V, Faston 4,8mm, ON-OFF

**Part No.**    **Ord. No.**

S 1802.1108    434

S 1806.1102    441