

## Sockets and Accessories

F 95.83.3  
F 95.85.3



F 95.93.3  
F 95.95.3



Part No.	Description
F 95.83.3	Screw terminal socket panel for F4031, for modules 99.80 series
F 95.85.3	Screw terminal socket panel for F4052, for modules 99.80 series
F 95.93.3	Screw terminal socket panel for F4031, for modules 99.80 series
F 95.95.3	Screw terminal socket panel for F4052,-61, for modules 99.80

Part No.	Ord. No.
S F 95.83.3	6678
S F 95.85.3	6679
S F 95.93.3	54456
S F 95.95.3	8906

F 95.03  
F 95.05



F 94.04



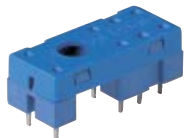
Part No.	Description
F 95.03	Screw terminal socket panel for F4031, for modules 99.02 series
F 95.05	Screw terminal socket panel for F4052,-61, for modules 99.02 ser.
F 94.04	Screw terminal socket panel for F55.34(2), for modules 99.02 ser.

Part No.	Ord. No.
S F 95.03	57209
S F 95.05	57210
S F 94.04	57210

F 95.13.2



F 95.15.2



Part No.	Description
F 95.13.2	PCB Socket for F4031
F 95.15.2	PCB Socket for F4052

Part No.	Ord. No.
S F 95.13.2	6674
S F 95.15.2	6675

### F 99.80 SERIES

Coil indication and EMC suppression modules.



Part No.	Description
F 99.02.9.024.99	LED+reversing of polarity protector diode 24VDC
F 99.80.0.230.59	LED 230V AC
F 99.80.9.024.99	LED+diode module for F958(9)33, F958(9)53

Part No.	Ord. No.
O F 99.02.9.024.99	51619
O F 99.80.0.230.59	50426
S F 99.80.9.024.99	47356

F 095.33  
F 095.51



Part No.	Description
F 090.33	Wire metallic clamp, serie 60
F 095.51	Wire metallic clamp for relay socket 95.13 and 95.15

Part No.	Ord. No.
O F 090.33	64206
S F 095.51	6676

F 094.91.3  
F 095.01  
F 095.91.3



Part No.	Description
F 094.91.3	Eject/retaining clip for 94.04 (serie 55)
F 095.01	Eject/retaining clip for 95.03, 95.05
F 095.91.3	Eject/retaining clip for serie 40

Part No.	Ord. No.
S F 094.91.3	57573
S F 095.01	57255
S F 095.91.3	50483

F 093.20

F 094.06

F 095.08  
F 095.18

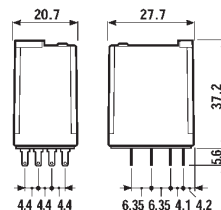
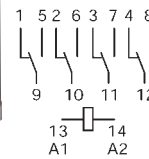


Part No.	Description
F 093.20	20-way jumper link, 36A for sockets 93.01/51
F 094.06	6-way jumper link, 10A/250V, suitable for 94.04
F 095.08	8-way jumper link, max. current 10A, for 95.83.3, 95.85.3
F 095.18	8-way jumper link, max. current 10A, for 95.05, 95.03

Part No.	Ord. No.
S F 093.20	53469
S F 094.06	67844
S F 095.08	68832
S F 095.18	54461

## Industrial Relays

F 55.34 SERIES



F 60.13 SERIES

Alternative of industry standard RP700.

