

M80

Quad Band GSM/GPRS Module

QUECTEL

Wireless Module Expert



Quad Band



Highly Compact Size



GPRS Multi-slot Class 12



Extended
Temperature Range



SD Card Interface



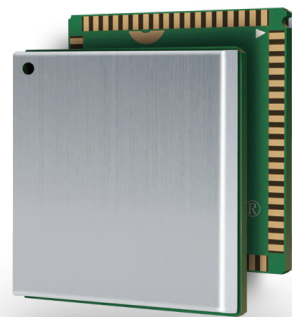
PCM



Serial Port
Multiplexer (GSM0710)



Embedded Internet
Service Protocols



M80 is one of the smallest Quad-band GSM/GPRS surface mounted modules in the world. The low profile and small size of the unique LGA package makes it easy to embed M80 module in the customer applications and to achieve the highest reliability and robustness.

Featuring an industry-standard interface, M80 delivers GSM/GPRS performance for Data, SMS, Voice and Multi-media with extremely low power consumption, extended temperature and compact profile. The ultra compact size with integrated protocols permits M80 to meet almost all the M2M requirements, including VTS, Personal Tracking, Security, Wireless POS, Industrial PDA, Smart Metering and many other M2M applications.

- Quad-band GSM/GPRS module with a size of 23 x 25 x 2.6mm
- Innovative LGA Package
- eCall / ERA-GLONASS (Supported in the specific firmware)
- Embedded powerful Internet service protocols, multiple Sockets & IP addresses
- Based on mature and field-proven platform, backed up by our support service, from definition to design and production

M80

Quad Band GSM/GPRS Module

General Features

Quad Band	850/900/1800/1900 MHz
GPRS Multi-slot Class	12, 1~12 configurable
GPRS Mobile Station	Class B
Compliant with GSM Phase 2/2+	Class 4 (2W @850/900 MHz) Class 1 (1W @1800/1900 MHz)
Supply Voltage Range	3.3~4.6 V 4.0V nominal
Low Power Consumption	1.1mA@DRX=5 0.95mA@DRX=9
Operation Temperature	-45 °C ~ +85 °C
Dimensions	23mm × 25mm × 2.6mm
Weight	Approx. 3.3g
Control via AT commands (GSM 07.07 ,07.05 and other enhanced AT Commands)	
SIM Application Toolkit	

Specifications for Fax

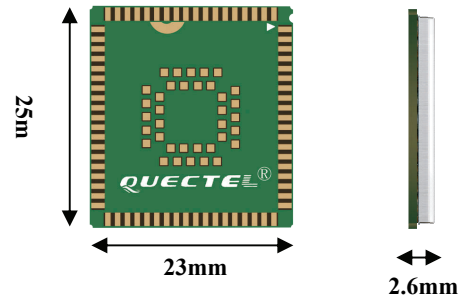
Group 3, Class 1& 2

Specifications for Data

GPRS Class 12	Max. 85.6 kbps (uplink & downlink)
PBCCH Support	
Coding Schemes	CS 1, 2, 3, 4
CSD	Up to 14.4 kbps
USSD	
Non Transparent Mode	
Protocols	PPP, TCP UDP, FTP MMS, MUX HTTP,SMTP

Specifications for SMS

Point-to-point MO and MT
SMS Cell Broadcast
Text and PDU Mode



Specifications for Voice

Speech Codec Mode	Half Rate (HR) Full Rate (FR) Enhanced Full Rate (EFR) Adaptive Multi-Rate (AMR)
Echo Arithmetic	Echo Cancellation Echo Suppression Noise Reduction

Interfaces

External SIM	3V/1.8V
ADC	2 inputs
UART Interface	3 interfaces
Analog Audio Interface	2 inputs, 3 outputs Embedded Class-AB amplifier
SD Card Interface	Up to 32GB
RTC Backup	
PCM Interface	
Antenna Pad	

Contact Us

Address	No. 501, Building 13, No.99 Tianzhou Road, Shanghai, China
Email	info@quectel.com
Tel	+86 21 51086236

