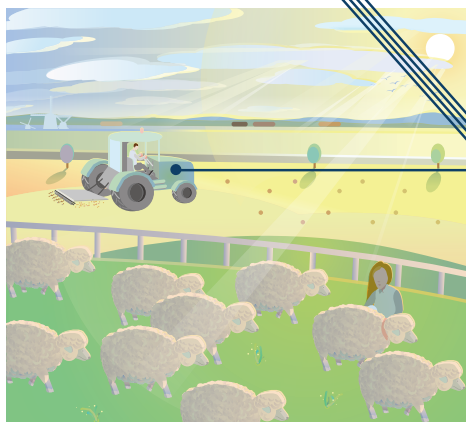




TWP SERIES



TWP Series

TWP is the waterproof panel PC series from TechNexion's panel PC portfolio. It is designed to enable operation and maintenance in production environments which are wet – and need to be hygienic – easier, faster and more convenient. Our TWP series is available with either ARM or x86 architecture. Through internal mini-PCle sockets with SIM and M.2 expansion slots for SSD, 3G, LTE and Wi-Fi expansion modules, it enables a huge range of options to connect to the cloud or a remote network.



IP69K



Robust Features for High Temperature and Waterproof Usage

The TWP series has IP69K waterproof certification to enable jet spray cleaning; SUS 304 approved stainless steel to repel dirt and dust; a projected capacitive touchscreen that you can operate with industrial gloves; and VESA 75 and Yoke industry standard mounting.

It also has a passively cooled fanless design with all solid-state components; it is able to withstand extreme temperatures, high vibration, and high humidity.

Unique Expansion Possibilities

The TWP series also delivers easy and long-lasting, tightly integrated customization, enabling you to have a solution that better matches the requirements and therefore budget of your project. Expansion is made possible through a range of power and networking and I/O modules, while the board-to-board connectors ensure the expanded product can be used in environments with a high degree of friction.



12V

24V

8-36V

PoE

Power and Networking Options

A range of off-the-shelf modules are available with in-built networking and single 12V DC, 24V DC, 8-36V DC wide power, or Power over Ethernet (PoE) – with smart network switching capability – options.

Supplementary Automation I/O

Our I/O expansion modules have CAN Bus, UART, USB and GPIO interfaces. Moreover, customers can take advantage of our in-house design and customization services. We have successfully delivered thousands of projects for our customers, ranging from small modifications to projects that needed expansion modules completely designed from the ground up with extremely complex requirements.



Longevity

TechNexion TWP series panel computing devices only incorporate components from suppliers who support our roadmaps. In addition, we support them with value added technical services such as life cycle management, revision control and end-of-life support.

TechNexion and Open Source

Like all TechNexion products, our waterproof panel PC series comes with truly open sourced software including Yocto, Android and Ubuntu versions. It also has out-of-the-box testing and development software kits to allow you to get working on the software for your device as soon as possible

Our panel computing devices come standard with source code and binary demo images for the following operating systems:



Android binary demo images, instructions to make your own, as well as complete source code.



Linux binary demo images, full source code, u-boot, and and support packages.



Yocto binary demo images, full source code, u-boot, and support packages.



Ubuntu binary demo images.



Windows support packages available on x86 models.

OVERVIEW



Model Name

TWP-1010-IMX6

TWP-1010-BSW

Display

LCD	10.1 inch	10.1 inch
Resolution	1280 x 800 pixels	1280 x 800 pixels
Luminance	350 cd/m ²	350 cd/m ²

Core System

Architecture	ARM Cortex-A9	Intel x86 Braswell
Processor	NXP i.MX6 Solo 1GHz NXP i.MX6 DualLite 1GHz NXP i.MX6 Quad 1GHz	Atom x5-E8000 (4x 1.04GHz) Pentium N3710 (4x 1.60GHz)
PMIC	NXP MMPF0100	
Memory	up to 2GB DDR3	up to 8GB SO-DIMM DDR3L
Storage	eMMC/M.2 SSD (optional)	M.2 SSD

Connectivity

Network LAN	1x Atheros AR8035 Gigabit LAN	1x Intel i210 Gigabit LAN
PoE	optional	optional

Expansion Interfaces

M.2 Slot	2x	3x (WiFi/SATA/LTE)
mini-PCIe + SIM	2x	

External Connectors

Network	8-pin M12	8-pin M12
USB	8-pin M12 (2x USB 2.0 port)	8-pin M12 (2x USB 2.0 port)
CAN Bus	optional*	
Serial	8-pin M12	8-pin M12
GPIO	optional*	optional*

Others

Power Connector	3-pin M12	3-pin M12
OS Support	Android, Yocto, Ubuntu	Ubuntu, Windows

Certification	Compliant with CE / FCC / RoHS / REACH	Compliant with CE / FCC / RoHS / REACH
---------------	--	--

Mechanical

Enclosure Material	Stainless Steel	Stainless Steel
Front Bezel	Stainless Steel	Stainless Steel
IP Rating	IP69K Salt Water	IP69K Salt Water
Dimensions	293(W) x 211(H) x 56(D) mm	293(W) x 211(H) x 56(D) mm
Weight	2800 grams	2800 grams



Model Name

TWP-1560-IMX6

TWP-1560-BSW

Display		
LCD	15.6 inch	15.6 inch
Resolution	1366 x 768 pixels	1366 x 768 pixels
Luminance	300 cd/m ²	300 cd/m ²
Core System		
Architecture	ARM Cortex-A9	Intel x86 Braswell
Processor	NXP i.MX6 Solo 1GHz NXP i.MX6 DualLite 1GHz NXP i.MX6 Quad 1GHz	Atom x5-E8000 (4x 1.04GHz) Pentium N3710 (4x 1.60GHz)
PMIC	NXP MMPF0100	
Memory	up to 2GB DDR3	up to 8GB SO-DIMM DDR3L
Storage	eMMC/M.2 SSD (optional)	M.2 SSD
Connectivity		
Network LAN	1x Atheros AR8035 Gigabit LAN	1x Intel i210 Gigabit LAN
PoE	optional	optional
Expansion Interfaces		
M.2 Slot	2x	3x (WiFi/SATA/LTE)
mini-PCIe + SIM	2x	
External Connectors		
Network	8-pin M12	8-pin M12
USB	8-pin M12 (2x USB 2.0 port)	8-pin M12 (2x USB 2.0 port)
CAN Bus	optional*	
Serial	8-pin M12	8-pin M12
GPIO	optional*	optional*
Others		
Power Connector	3-pin M12	3-pin M12
OS Support	Android, Yocto, Ubuntu	Ubuntu, Windows
Certification	Compliant with CE / FCC / RoHS / REACH	Compliant with CE / FCC / RoHS / REACH
Mechanical		
Enclosure Material	Stainless Steel	Stainless Steel
Front Bezel	Stainless Steel	Stainless Steel
IP Rating	IP69K Salt Water	IP69K Salt Water
Dimensions	438(W) x 289(H) x 56(D) mm	438(W) x 289(H) x 56(D) mm
Weight	6200 grams	6200 grams

*Available on I/O Expansion Board

